

## DP.B.1. Use of species in procedures

### Data inclusion criteria

Report year: 2016

Country: Denmark

EU Submission: ALL

Re-use: ALL

Genetic status: ALL

Animal Species: ALL

Species grouping Level 1: ALL

Species grouping Level 2: ALL

Mammals: ALL

Non-human primates: ALL

Submission Id: ALL

Id 1: ALL

Id 2: ALL

Id 3: ALL

### Narrative

This report shows the number of uses of animals by each species. The information is also summarised by different categories of species.

It shows both the first, and all the subsequent uses, of the animals completed in the reporting period (unless either option is specifically excluded in the data filtering criteria when selecting the report).

The Data Provider reports allow the creation of standard (public) reports

- before the reports are available for the general public (i.e. non-published data), and
- including information on non-EU submissions (as a default) i.e. Member State specific national data e.g. on animals killed for tissue/organs – unless specifically excluded in the data filtering criteria when selecting the report.

Data filtering criteria has been complemented with an option to filter data into the report also at the level of species groupings.

It should be remembered that by including one data filtering criterion, all others from that selection type are by default excluded. For example: if selecting "mouse" as the animal species, the data on the report will only show the results containing mice. However, if at the same time an incompatible selection is made e.g. selecting species grouping level 2 "birds" (excluding all other groups of species covering also "mammals" (including "mouse")), no data is shown in the report, as the two selections are incompatible.



## DP.B.1. Use of species in procedures

Animal Species	Number of Animals	%
Mice	155,291	56.84%
Rats	46,682	17.09%
Guinea-Pigs	3,056	1.12%
Hamsters (Syrian)	152	0.06%
Hamsters (Chinese)		
Mongolian gerbil		
Other Rodents	4	0.00%
Rabbits	2,325	0.85%
Cats	18	0.01%
Dogs	266	0.10%
Ferrets	2	0.00%
Other carnivores	579	0.21%
Horses, donkeys & cross-breeds	319	0.12%
Pigs	7,970	2.92%
Goats	6	0.00%
Sheep	37	0.01%
Cattle	2,110	0.77%
Prosimians		
Marmoset and tamarins		
Cynomolgus monkey		
Rhesus monkey		
Vervets Chlorocebus spp.		
Baboons		
Squirrel monkey		
Other species of New World Monkeys (Ceboidea)		
Other species of Old World Monkeys (Cercopithecoidea)		
Other species of non-human primates		
Apes		
Other Mammals	55	0.02%
Domestic fowl	1,732	0.63%
Other birds	373	0.14%
Reptiles	262	0.10%
Rana		
Xenopus	56	0.02%
Other Amphibians	30	0.01%
Zebra fish	3,308	1.21%
Other Fish	48,591	17.78%
Cephalopods		
<b>Total</b>	<b>273,224</b>	

Mammals	Number of Animals
Rodents	205,185
Rabbits	2,325
Carnivores	865
Equidae	319
Artiodactyla	10,123
Non-human primates	
Other mammals	55
<b>Total</b>	<b>218,872</b>

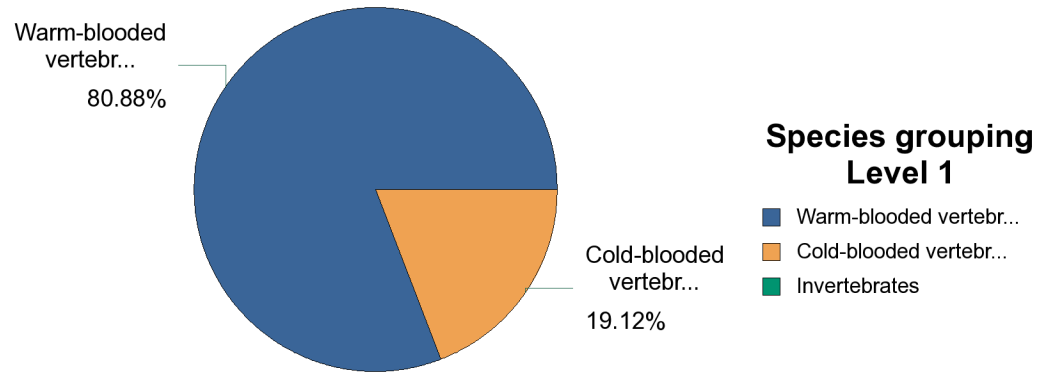
Non-human primates	Number of Animals
Prosimians	
New World Monkeys	
Old World Monkeys	
Apes	
<b>Total</b>	

Species grouping Level 1	Number of Animals
Warm-blooded vertebrates	220,977
Cold-blooded vertebrates	52,247
Invertebrates	
<b>Total</b>	<b>273,224</b>

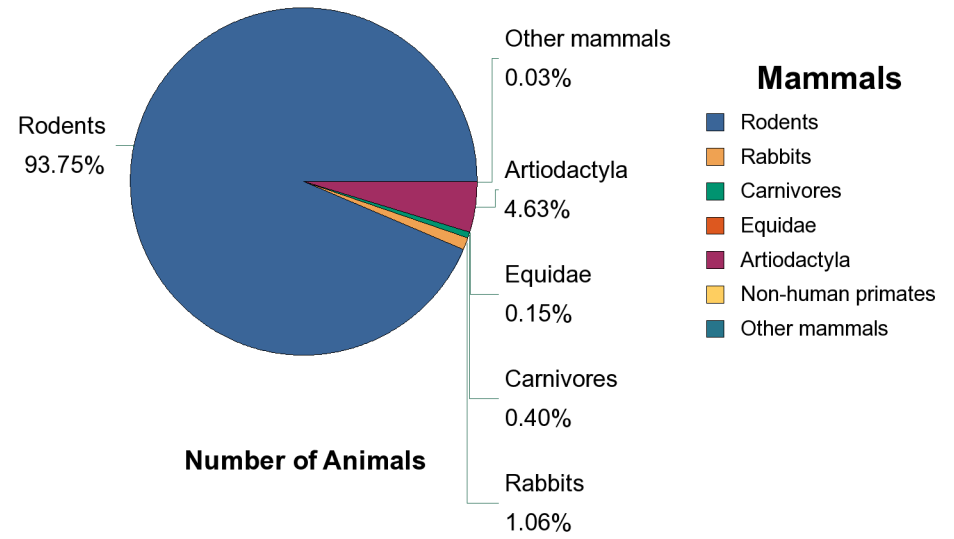
Species grouping Level 2	Number of Animals
Mammals	218,872
Birds	2,105
Fish	51,899
Amphibians	86
Reptiles	262
Cephalopods	
<b>Total</b>	<b>273,224</b>



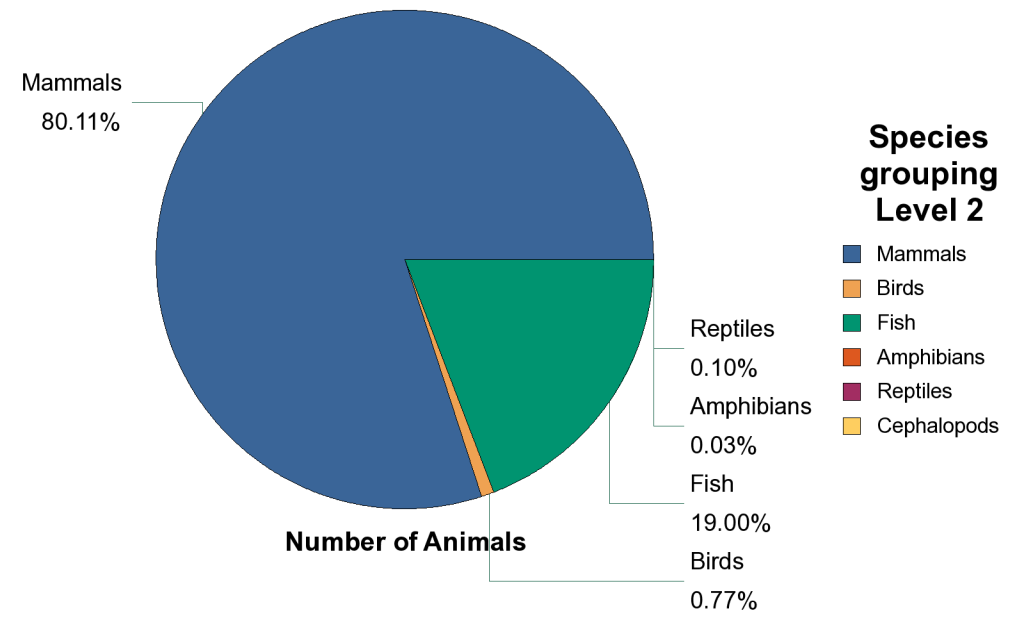
# DP.B.1. Use of species in procedures



Number of Animals



Number of Animals



Number of Animals

