

DP.B.1. Use of species in procedures

Data inclusion criteria

Report year: 2015 (APPROVED)

Country: Denmark

EU Submission: ALL

Re-use: ALL

Genetic status: ALL

Animal Species: ALL

Species grouping Level 1: ALL

Species grouping Level 2: ALL

Mammals: ALL

Non-human primates: ALL

Submission Id: ALL

Id 1: ALL

Id 2: ALL

Id 3: ALL

Narrative

This report shows the number of uses of animals by each species. The information is also summarised by different categories of species.

It shows both the first, and all the subsequent uses, of the animals completed in the reporting period (unless either option is specifically excluded in the data filtering criteria when selecting the report).

The Data Provider reports allow the creation of standard (public) reports

- before the reports are available for the general public (i.e. non-published data), and
- including information on non-EU submissions (as a default) i.e. Member State specific national data e.g. on animals killed for tissue/organs – unless specifically excluded in the data filtering criteria when selecting the report.

Data filtering criteria has been complemented with an option to filter data into the report also at the level of species groupings.

It should be remembered that by including one data filtering criterion, all others from that selection type are by default excluded. For example: if selecting "mouse" as the animal species, the data on the report will only show the results containing mice. However, if at the same time an incompatible selection is made e.g. selecting species grouping level 2 "birds" (excluding all other groups of species covering also "mammals" (including "mouse")), no data is shown in the report, as the two selections are incompatible.

DP.B.1. Use of species in procedures

Animal Species	Number of Animals	%
Mice	155,693	63.70%
Rats	48,632	19.90%
Guinea-Pigs	2,643	1.08%
Hamsters (Syrian)	172	0.07%
Hamsters (Chinese)		
Mongolian gerbil		
Other Rodents	86	0.04%
Rabbits	1,668	0.68%
Cats	59	0.02%
Dogs	174	0.07%
Ferrets		
Other carnivores	886	0.36%
Horses, donkeys & cross-breeds	120	0.05%
Pigs	10,579	4.33%
Goats	11	0.00%
Sheep	47	0.02%
Cattle	555	0.23%
Prosimians		
Marmoset and tamarins		
Cynomolgus monkey		
Rhesus monkey		
Vervets Chlorocebus spp.		
Baboons		
Squirrel monkey		
Other species of New World Monkeys (Ceboidea)		
Other species of Old World Monkeys (Cercopithecoidea)		
Other species of non-human primates		
Apes		
Other Mammals	38	0.02%
Domestic fowl	2,407	0.98%
Other birds	438	0.18%
Reptiles	265	0.11%
Rana		
Xenopus	64	0.03%
Other Amphibians	26	0.01%
Zebra fish	2,530	1.04%
Other Fish	17,318	7.09%
Cephalopods		
Total	244,411	

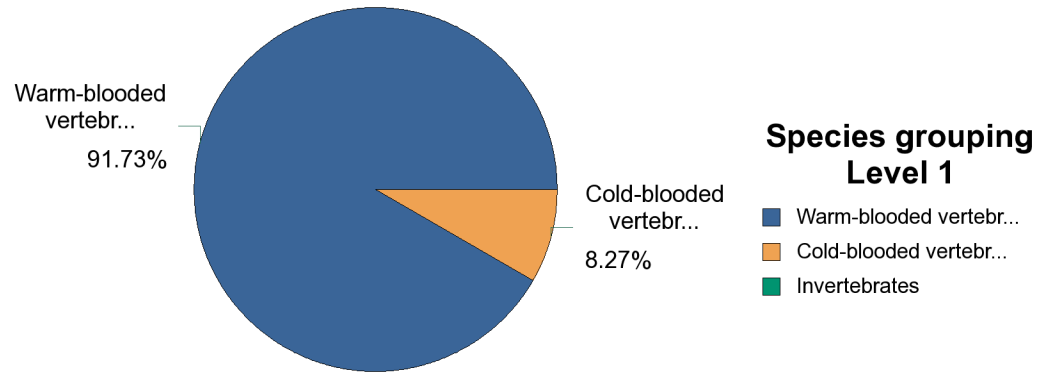
Mammals	Number of Animals
Rodents	207,226
Rabbits	1,668
Carnivores	1,119
Equidae	120
Artiodactyla	11,192
Non-human primates	
Other mammals	38
Total	221,363

Non-human primates	Number of Animals
Prosimians	
New World Monkeys	
Old World Monkeys	
Apes	
Total	

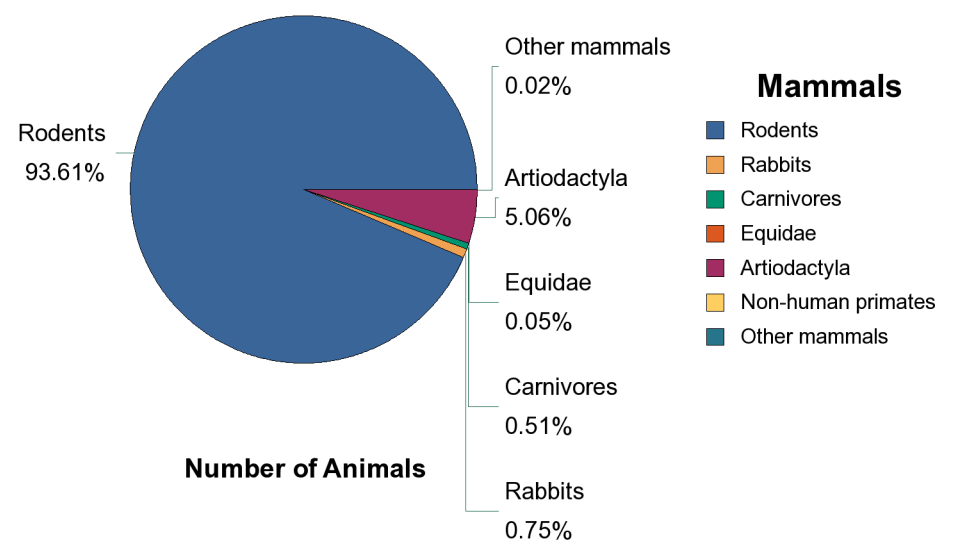
Species grouping Level 1	Number of Animals
Warm-blooded vertebrates	224,208
Cold-blooded vertebrates	20,203
Invertebrates	
Total	244,411

Species grouping Level 2	Number of Animals
Mammals	221,363
Birds	2,845
Fish	19,848
Amphibians	90
Reptiles	265
Cephalopods	
Total	244,411

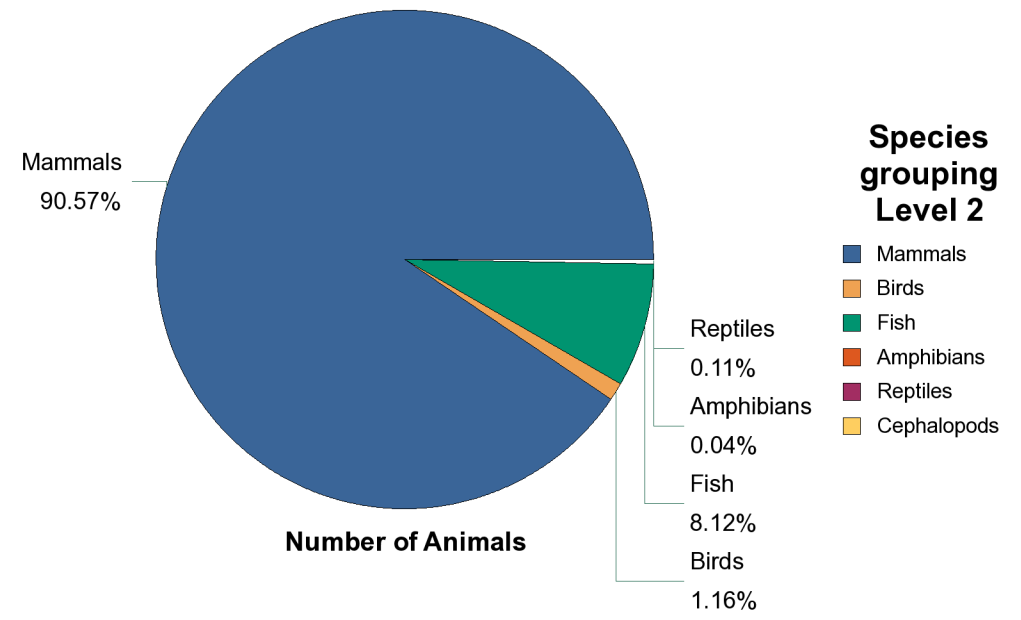
DP.B.1. Use of species in procedures



Number of Animals



Number of Animals



Number of Animals

